

SMD Placement

CM402-M/L

MODULAR HIGH SPEED PLACEMENT MACHINE

KXF-4Y3C / KXF-4Z4C

High placement quality and high productivity, 0.06 s/chip (60 000 cph).
Easy, high efficiency, and time-saving preparation,
and capability to support parts flexibly.



KXF-4Y3C



With Shuttle Tray Feeder

KXF-4Y3C only



- Main control boards are Lead-free
 - GHG Factor 2.24
 - Resource Factor 3.27
- (Ref.Product:CM202-DH)



※It may not be conformed to Machinery Directive and EMC Directive in case of optional configuration and custom-made specification.



Model name	CM402-M	CM402-L
Model No.	KXF-4Y3C	KXF-4Z4C
PCB dimensions	L 50 mm × W 50 mm to L 330 mm × W 250 mm	L 50 mm × W 50 mm to L 510 mm × W 460 mm
●High-speed head		
Max.speed	0.06 s/chip (For type A head)	
Placement accuracy	±50 μm/chip (Cpk ≥ 1)	
Component dimensions	0603 chip to L 24 mm × W 24 mm	
●Mult-functional head		
Max.speed	0.21 s/QFP (For type B head)	
Placement accuracy	±35 μm/QFP (Cpk ≥ 1)	
Component dimensions	0603 chip to L 100 mm × W 90 mm	
PCB exchange time	1.8 s (Under optimum conditions)	0.9 s (Board length: up to 240 mm Under optimum conditions)
Electric source※1	3-phase AC 200 V, 3.5 kVA	3-phase AC 200 V, 2.5 kVA
Pneumatic source※2	0.49 MPa, 150 L /min (A.N.R.)	
Dimensions	W 2 350 mm × D 2 460 mm × H 1 430 mm ※3	W 2 350 mm × D 2 690 mm × H 1 430 mm ※3
Mass※4	2 700 kg	3 000 kg

※Values such as Max.speed and placement accuracy may vary depending on operating conditions.
※Please refer to the specifications on details.

※1:Compatible with 220 / 380 / 400 / 420 / 480 V

※2:Standard. However, body only

※3:Excluding monitor and signal tower

※4:Standard configuration, excluding collective change cart and tray feeders.
This differs depending on optional configuration.

CM402-M/L

KXF-4Y3C / KXF-4Z4C

Compact and high space productivity

Development of the high-speed multiple heads and the high-speed and high-accuracy recognition system realizes high-speed placement. In addition, the main body is compact and has a superior space productivity.

Max. speed **0.06 s /chip 60 000 cph** Space productivity **10 380 cph /m²** (CM402-M 4 high-speed heads)
 150% higher productivity than the CM202 model

Intelligent feeder

● Five types of tape feeders can support all tapes.

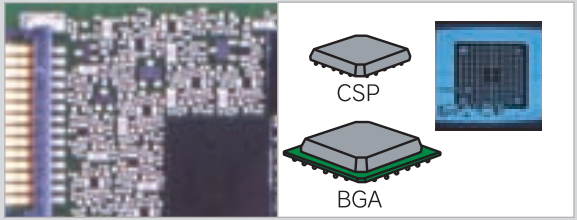
66 types → 10 types (CM202) (CM402)

Tape feed pitch can be set digitally. With the remaining parts count recording function, the warning on the lack of parts can be given. For the 8 mm tape, up to 216 kinds can be placed.

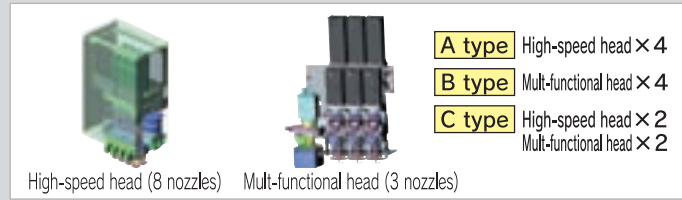
Supply type	Maximum number of kinds	Supply type	Maximum number of kinds
8 mm double tape feeder	216	88 mm tape feeder	20
12·16 mm tape feeder	108	104 mm tape feeder	16
24·32 mm tape feeder	52	32 mm adhesive tape feeder	36
44·56 mm tape feeder	36	Intelligent stick feeder	Type B 24
72 mm tape feeder	24	Intelligent bulk feeder	108

Realizes the capability to support a wide variety of parts and high efficiency

0603 chip with fine-pitch mounting Gang recognition for bumps



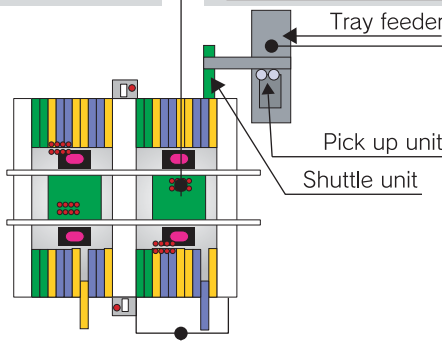
The most suitable head can be selected for each beam, according to the product and production volume.



Tape splicing function



The operating rate is improved and the load on an operator is lightened, by reducing the machine's stopping time because of the lack of parts to zero.



Shuttle tray feeder



Feeder layout for each table can be set as you like



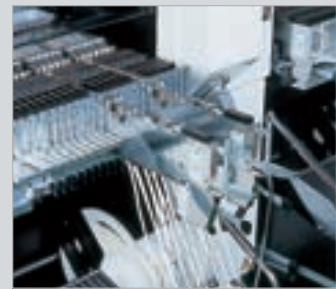
- Feeder for the common model
- Feeder for the A model
- Feeder for the B model

After setting various kinds of feeders in advance, the usage of each feeder can be set.

Feeder collective-exchange cart



Feeder-by-feeder tape replacement during operation



⚠ Safety Cautions

To ensure safety when using this equipment all work should be performed according to that as stated in the supplied Operating Instructions. Read your operating instructions manual thoroughly.

<http://panasonic.co.jp/pfsc/en/>

Inquiries...

Panasonic Factory Solutions Co., Ltd.

Marketing & Sales Coordination Department

441-13 Nagahasu, Tateishi-cho, Tosu-city, Saga 841-8585, Japan
 TEL +81-942-84-2644 to 2646 FAX +81-942-84-2636

All data as of December. 1, 2004.

※Changes in specifications and appearance may be made without notice for product improvement.
 ※Printed on recycled paper with soy ink.dec.2004